



UNISON.
PARADIGM.®



Smithsonian National Museum of African American History and Culture
Washington, D.C.
Photo: Alan Karchmer



Unison Paradigm Control System

ETC's Unison Paradigm Control System understands the art of architecture. It is powerful enough to manage the largest of installations, yet graceful enough to guide users through it with style.

Next-level control is standard on Paradigm. Sophisticated facility lighting is augmented by a comprehensive suite of environmentally sound tools. Occupancy sensing, daylight harvesting, and time scheduling capabilities ensure buildings realize their maximum energy and budget savings while adhering to the demands of modern energy codes. Customizable touchscreens, elegant wall stations, and advanced control options help Paradigm show a sophisticated face for its users.

The flexibility of Paradigm is second to none. Modular control electronics, dedicated power and control infrastructure, and a range of accessories mean a personalized system for every building. Paradigm can speak to devices from other manufacturers easily, too, extending its reach and giving users complete control over their facilities.

Restaurants, hotels, casinos, schools and centers of higher learning, museums, houses of worship, office buildings, conference centers, theme parks — whatever space you have, however you manage it, however people use it, Paradigm can control it.



Harrah's Cherokee Casino
Cherokee, NC

Touchscreen Stations

Touchscreen Stations provide graphic-based control right at your fingertips; anywhere you need them. Need even more flexibility? An app that lets your smartphone control the system is also available.



7" Wall-Mount Touchscreen

Model Number P-TS7

The Wall-Mount Touchscreen houses a vivid, seven-inch color display that elegantly blends into any setting. The 180°-viewable display with built-in proximity and ambient light sensors make sure the station is ready to respond at all times.

- Custom graphical control pages allow for unique presentation and simple navigation
- Dynamic color selection for LED fixtures with intuitive Color Picker
- Timed event creation, edit, and override
- Advanced electronic lock-out with five levels of configurable access on each touchscreen
- Simple installation using PoE networking or our LinkConnect control network
- Available in Cream, Ivory, Gray, Black, and White
- 7-inch WVGA (800x480), 24-bit color LCD touchscreen



7" Handheld Touchscreen

Model Number P-TS7-H

The Handheld Touchscreen gives wireless access to a Paradigm system. With its rugged aluminum frame, users can take the Handheld Touchscreen anywhere. The responsive interface recognizes where users are in their facility and offers control options based on location.

- Wireless connectivity and responsive location awareness using MeshConnect access stations
- Unique control pages automatically loaded based on where the touchscreen connects to the system allows for unique presentation and simple navigation
- Instant, dynamic color selection for LED fixtures with intuitive Color Picker feature
- Timed Event creation, edit, and override
- Advanced electronic lock-out with five levels of configurable access on each touchscreen
- 7-inch WVGA (800x480), 24-bit color LCD touchscreen
- Tilt sensors automatically detect and adjust the display orientation
- Internal Lithium-Ion battery for six hours of continuous use, or ten hours of standby use
- Charges in Handheld Touchscreen Docking Station or via USB



7" Portable Touchscreen

Model Number P-TS7-P, P-TS7-PE

Paradigm Portable Touchscreens combine the 7-inch, high-resolution color display of the wall-mount touchscreen to a portable enclosure that can be moved within a room, or from space to space. Portable Touchscreens connect to the Paradigm system via the Portable LinkConnect cable or via Cat5 with PoE.

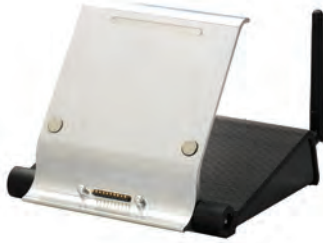
- Unique control pages automatically loaded based on where the touchscreen connects to the system allows for unique presentation and simple navigation
- Instant, dynamic color selection for LED fixtures with intuitive Color Picker feature
- Timed Event creation, edit, and override
- Advanced electronic lock-out with five levels of configurable access on each touchscreen
- Simple connection to the control system using PoE networking or our Portable LinkConnect control network
- 7-inch WVGA (800x480), 24-bit color LCD touchscreen



7" Rack-Mount Touchscreen

Model Number P-TS7-RM

The Unison Paradigm 7-inch Touchscreen can be installed in any standard 19-inch equipment rack using the optional rack mounting kit. The powder-coated black finish lets your touchscreen blend in with the rest of your equipment, while the user interface remains easily accessible for system control.



Handheld Touchscreen Docking Station

Model Number P-LCD-DOCK

The stylish Touchscreen Docking Station provides a docking location and battery charging capabilities for the Handheld Touchscreen. It connects to the Paradigm control system using a standard or PoE connection and can be tilted for operation and viewing when the Touchscreen is docked. When your Handheld Touchscreen is undocked, the Tabletop Dock provides powerful MeshConnect wireless connection to the Handheld Touchscreen.



Wireless Access Station

Model Number P-LCD-WAS

The Handheld Touchscreen's optional MeshConnect Access Station allows users to move their Handheld Touchscreens throughout their facility. The access station provides a coverage radius of 100 feet (30 meters) and connects to the Paradigm control system over LinkConnect.

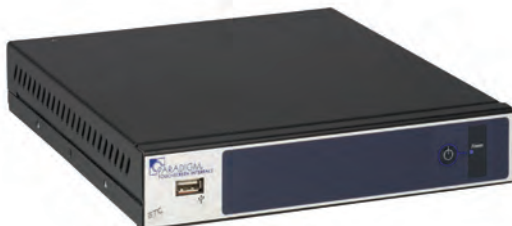


18" Touchscreen Station

Model Number P-TS18

The 18-inch Touchscreen is a powerful command center that gives you a big-picture view of your lighting operations. Comes with an elegant tabletop stand, or it can be rack-mounted with an optional accessory kit.

- Custom graphical control pages allow for unique presentation and simple navigation
- Dynamic color selection for LED fixtures with intuitive Color Picker
- Timed Event creation, edit, and override
- Advanced electronic lock-out with five levels of configurable access on each touchscreen
- Simple system connection using Ethernet networking
- Available in Cream, Ivory, Gray, Black, and White
- 18.5" (1366x768 WXGA TFT) color LCD touchscreen



Touchscreen Interface

Model Number P-TSI

The Touchscreen Interface supports any Windows HID-compliant touchscreen display, giving you fingertip access to the graphical controls and information you need to manage your large lighting systems.

- Supports any size and resolution Windows HID-compliant touchscreen display
- Custom graphical control pages allow for unique presentation and simple navigation
- Dynamic color selection for LED fixtures with intuitive Color Picker
- Timed-event creation, edit and override
- Advanced electronic lock-out with five levels of configurable access on each touchscreen
- Simple system connection using Ethernet networking



JUMP
Boise, ID



Virtual Touchscreen

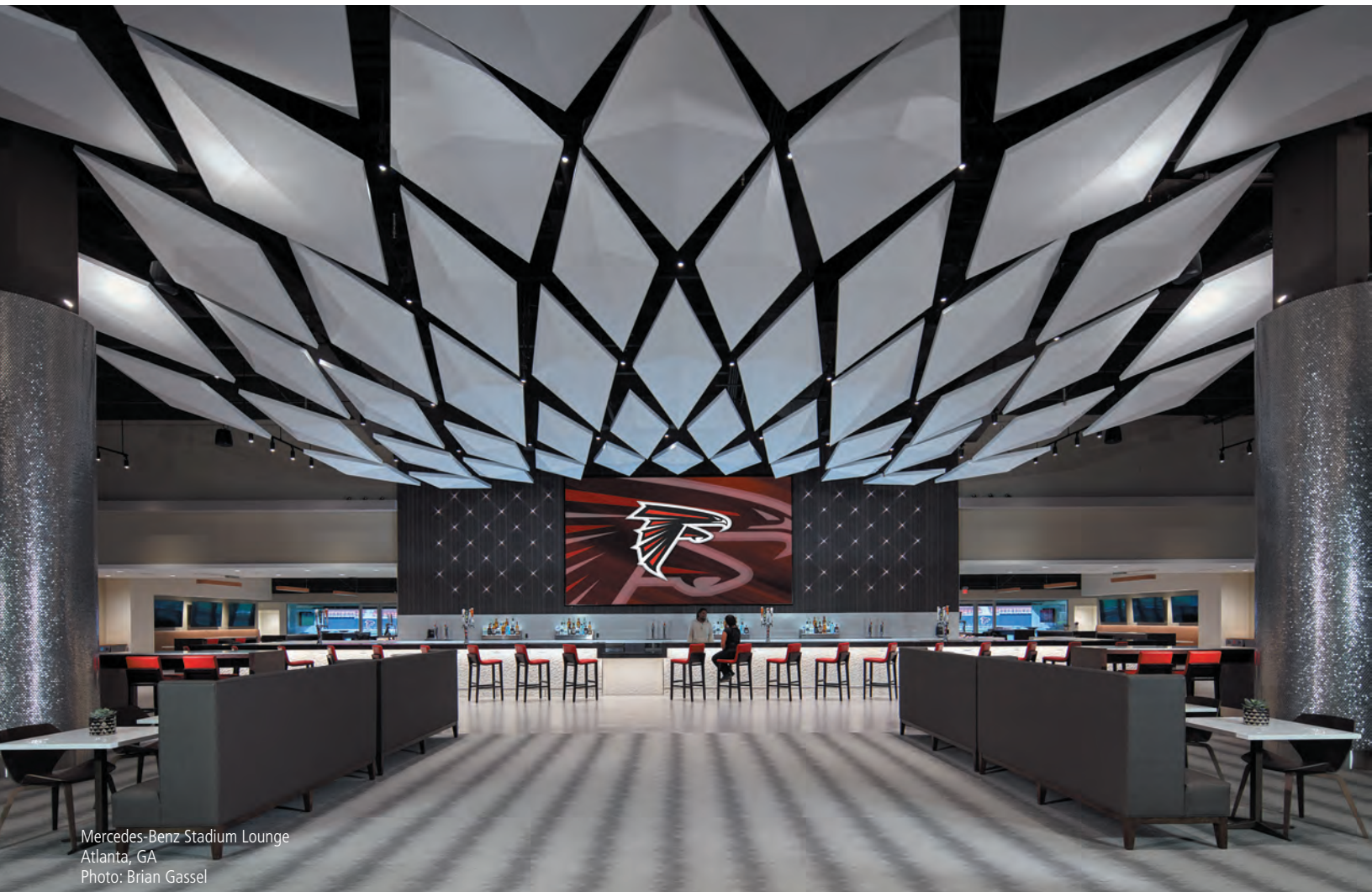
Model Number P-VTS

Virtual Touchscreens turn any computer into a Paradigm control station. Multiple Virtual Touchscreens can be created and configured to the system's needs and run on computers with touchscreens — or with a keyboard and mouse. Whether used locally, at a single system station, or globally by a facilities manager at the helm of central control, Virtual Touchscreen allows multiple venues to be configured separately or at a single large format screen or computer. Virtual Touchscreen requires the use of a Paradigm Central Control Server.



Mobile Button Station App

The Unison Paradigm Mobile Button Station App turns your handheld device into an eight-button station. The eight buttons allow you to recall lighting presets, combine spaces, and control zones, as well as record, activate, and deactivate presets. All standard Paradigm touchscreen themes are available from within the app, allowing it to fit the look and feel of any space.



Mercedes-Benz Stadium Lounge
Atlanta, GA
Photo: Brian Gassel

Control Stations

Paradigm's variety of control stations offer a stylish, simple interface to the power of the Paradigm Control System. Every option — from a one-button switch to multiple faders with customized LED feedback — is designed to let you get the most out of your installation.

Inspire Stations

Model Number PI100X

A sophisticated look means Inspire control stations match any décor, while clever engineering allows them to be installed in any location, giving you control everywhere you need it. They can be easily programmed for presets, zone control, space-combine, or any other control function.



- Available in one-, two-, four-, six-, and eight-button stations, as well as a four-button station with rotary fader
- Dynamic color selection for LED fixtures with intuitive Color Picker
- Custom laser-marked text labels available, pre-printed button labels standard
- LED status indicators with 16 color options, configurable per button
- Stations available in Cream, Gray, Black, and White
- Stations fit any standard switch box, including gangable boxes
- Fastener-free faceplate system with no visible mounting hardware
- Up to 1,640 feet of topology-free station wiring

Dual Tech Switch Mount Sensors

Model Number P-DOC-SM

One- or two-button stations offer simple manual control over lights — and the addition of dual technology sensors means meeting environmental energy codes has never been easier. Dual Tech sensors couple passive infrared with acoustic detection, so even in situations where movement is limited, lights can easily be triggered to stay on. Dual Tech sensors are ideal for restrooms, private rooms and other areas where no movement doesn't necessarily mean a space is vacant.



- Passive infrared and acoustic detection technologies
- Includes one or two control buttons
- Small motion detection up to 45 feet
- Supports walk test function for coverage confirmation
- Thirty-second grace timer
- Available in Cream, Gray, Black, and White finishes
- Up to 1,640 feet of topology-free station wiring



Heritage Button and Fader Stations

Model Number UH

Elegant and clean-lined, Unison Heritage Button and Fader control stations complement the aesthetics of any interior environment and are a breeze to install.



- Available in pre-configured button/fader combinations in a wide range of sizes, colors, and configurations
- Button stations are available with one to ten buttons
- Fader stations available with one to sixteen faders, and seven or twelve buttons
- Customizable, with made-to-order options including unique faceplate materials and custom legends
- LED status indicators with 16 color options, configurable per button or fader
- Fastener-free faceplate system with no visible mounting hardware
- Optional locking covers and electronic lock-out
- Up to 1,640 feet of topology-free station wiring



Heritage Consolette Station

Model Number UHPORT

The Unison Heritage Consolette station provides mobility and flexibility, allowing local control from a podium, table, or other temporary position. Stations can be moved from one room to another, with different settings and functionality at each connection point.



- Any Heritage button or fader/button station can be included
- 30-foot (9 meter) cable for connection to LinkConnect Portable wall plate



Responsive Controls

Smart buildings need smart controls. Paradigm's responsive controls make certain that everyone has the light they need and that every energy code is met, while ensuring that achieving both is painless.



Dual Tech Occupancy/Vacancy Sensors

Model Number P-DOC

Dual Tech Occupancy and Vacancy Sensors couple passive infrared detection with acoustic detection so even in situations where movement is limited, lights can easily be triggered to stay on. These Sensors support spaces of any size, including high ceiling applications. Dual Tech Sensors are ideal for restrooms, private rooms, and other areas where no movement doesn't necessarily mean a space is vacant.

- Passive infrared and acoustic detection technologies
- Wall- and ceiling-mount options
- Multiple coverage options for small and large rooms with up to 2,000-square-foot coverage
- Small motion detection up to 45 feet
- Activate or deactivate any system function
- Supports walk test function for coverage confirmation
- Thirty-second grace timer

PIR Occupancy/Vacancy Sensors

Model Number P-OCC, P-OCC-SR, P-OCC-HCM

PIR Occupancy/Vacancy Sensors use passive infrared technology to eliminate wasted energy. They can be configured to turn a light on when someone walks into a room — and automatically turn off lighting loads when a room is empty. The low-profile, sleek sensors can be installed anywhere in a facility to provide uninterrupted, 24/7/365 operation, without affecting the look and beauty of their surroundings.



- Wall- and ceiling-mount options
- Multiple coverage options for small and large rooms with up to 2,000-square-foot coverage
- Activate or deactivate any system function
- Supports walk test function for coverage confirmation
- Thirty-second grace timer

Light Sensors

Model Number P-LS, P-LSC, P-LSH

Light Sensors tap into Paradigm's advanced daylight harvesting capabilities and ensure building's meet modern energy codes by harnessing an area's available natural light and reducing electric light output. Sensors can be used as an all-in-one device, or you can detach the light sensor head to use as a smaller remote device. With an IP65 rating for wet-location use, the head can even be installed outdoors.



- Supports up to two sensors to average light levels in large areas
- 1 to 64,000 lux range with automatic sensitivity adjustment
- Remote sensors connect using two #16AWG wires
- Single Light Sensor for indoor, outdoor, and atrium use

System Control

Paradigm Control Processors and Servers are powerful enough to handle the largest installations, and made robust enough to do it year after year under the most stressful conditions.



Architectural Control Processor

Model Number P-ACP

The Paradigm Architectural Control Processor is the cornerstone of the Paradigm Control System. The Paradigm ACP is built to handle simple and complex systems and is packed with inputs and outputs to link multiple systems together. Designed for rock-solid performance, it keeps the lights in your facility on even during emergency situations.

- Solid-state electronics for 24/7/365 operation
- 1024 control outputs via streamingACN (sACN) or DMX
- Point of Control Interface with easy-to-read system display
- Web interface for easy modification, activation, and monitoring of system configuration and status
- Two-wire, topology-free LinkConnect station infrastructure for ultimate flexibility
- Ethernet connectivity for Touchscreen Stations
- Intuitive user interface, including creation of timed events and editing of presets or sequences
- Robust security at interface for secure user access
- Designed for use in Unison ERn and DRd enclosures



Station Power Modules and Repeaters

Model Number P-SPM-E, P-REP, P-DREP

Power for all of your Unison Paradigm control stations. The LinkConnect station protocol uses a two-wire, topology-free data bus — sending communication down the same wires as power — simplifying system wiring.

- Supports 63 control stations or sensors
- One Power Module and one Repeater Module supported per processor
- 24-volt DC power to support Unison interface stations and Paradigm Touchscreens
- Enclosure, rack and wall mount options available



Central Control Server

Model Number P-CCS

The Paradigm Central Control Server enables Paradigm systems to master even the most complex lighting system needs. By integrating a native BACnet communication system and incorporating ETC Virtual and Large-Format Touchscreens the Paradigm Central Control Server achieves the most comprehensive building-wide control.

- Energy Management and Monitoring Suite
- Bi-directional BACnet communication
- Supports up to 72 Paradigm Architectural Control Processors
- Built-in networked fault detection and reporting



Mercedes-Benz Stadium
Atlanta, GA
Photo: Brian Gassel



Harbin Opera House Studio Theatre
Harbin, China
Photo: Adam Mork

Enclosures

Processors, networking, battery back-up — all can be housed in enclosures designed to be easy to install, safe, and versatile.



ERn Wall-Mount Control Enclosure

Model Number ERn2-W, ERn4-W

A compact external enclosure mounts on nearly any wall surface to house Paradigm control electronics. Available in two sizes, the compact ERn 2 (15" x 9" x 10") and the larger ERn 4, which can support two ACP's and two Station Power Modules for higher density control.



ERn Rack-Mount Control Enclosure

Model Number ERn2-RM, ERn4-RM

A rack-mount enclosure for your Paradigm Control System. Engineered for compactness, the ERn fits any 19-inch equipment rack and features rear-access wiring terminals, pre-wired power input, and comes with a black-painted front panel with a locking door.

Dimming and Power Infrastructure

Rugged, intelligent solutions to make sure your power and control is everywhere you need it to be.



DRd Power Control

Model Number DRd6-12, DRd-12-24, DRd-12-48

A Paradigm Architectural Control Processor in a DRd enclosure gives users unparalleled lighting control and full-featured power control. DRd features modular dimming and switching with optional network interface cards and low-voltage control.

- Supports Paradigm Station Power Module for use with Heritage and Inspire stations.
- Loaded with native interface options including RS-232 serial, contact inputs and outputs, sACN, and DMX, as well as optional 0-10V or DALI control.
- Protection from power spikes and surges with short-circuit current ratings from 22,000 amps up to 100,000 amps
- UL924-Listed emergency-lighting bypass input with load shedding
- Supports a full range of power control modules



Power Control Modules for DRd Enclosures

ETC's wide variety of modules allow for simple and dependable control of any lighting load, from constant power to 0-10V to DALI, and more.

- Electronic Reverse Phase Dimming (ELV and Phase Adept series)
- Forward Phase Dimmer (D-series)
- Relay (R-series)
- Fluorescent Battery (FB-series)
- Constant Current (CC-series)
- Three-Wire Fluorescent (DF-series)



Unison Foundry

Foundry is a line of DMX-controlled distributed power control products that includes Mini Panels, Relay Controllers, 0-10V Controllers, and Phase-Adaptive Dimmers. Foundry products are the perfect partners for Unison Paradigm, Mosaic or any third-party DMX control system, helping users create a complete lighting and plug-load control package.



Museum of Natural Curiosity
Lehi, UT

Accessories

Paradigm's accessories make sure your control works no matter what state the power is in.



ERn Battery Pack

Model Number UPBO

Designed for use with ERn enclosures, the BatteryPack installs on the bottom of the enclosure and keeps the Paradigm ACP energized for at least 90 minutes when power is lost, providing seamless transfer from normal to emergency power, and back.



RideThru Option

Model Number URTO

The RideThru option for ERn and DRd enclosures keeps the control electronics powered for at least 10 seconds — ideal for normal/ emergency transfers if a backup generator is on site. This optional power pack is maintenance free and lives inside the enclosure.

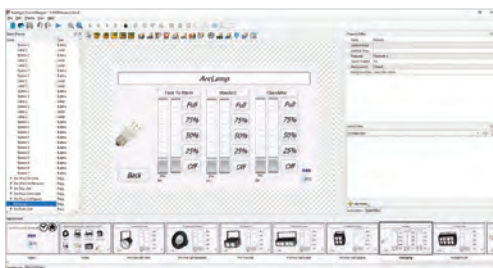
Software

At the heart of every Paradigm system is the world's best software for managing lighting infrastructure.



LightDesigner Software

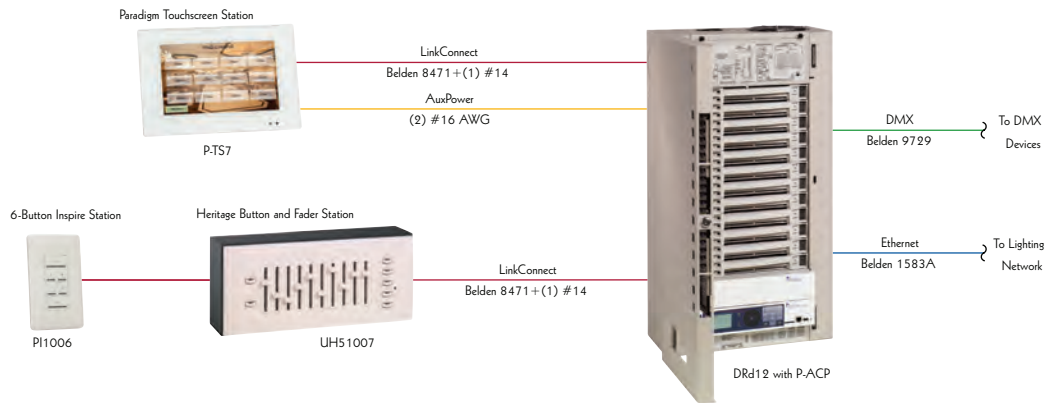
ETC's software for Paradigm control systems, LightDesigner allows a designer and a technician to use real-world terms and information as they collaborate on effective lighting control scenarios, including energy management, day-to-day operations, user interfaces, special events, and special effects. LightDesigner's powerful toolkit includes pre-programming and simulation capabilities as well as real-time live control and live editing of Unison Paradigm Control Systems. Behind the scenes, LightDesigner manages the data of a project, freeing the design team to create lighting environments.



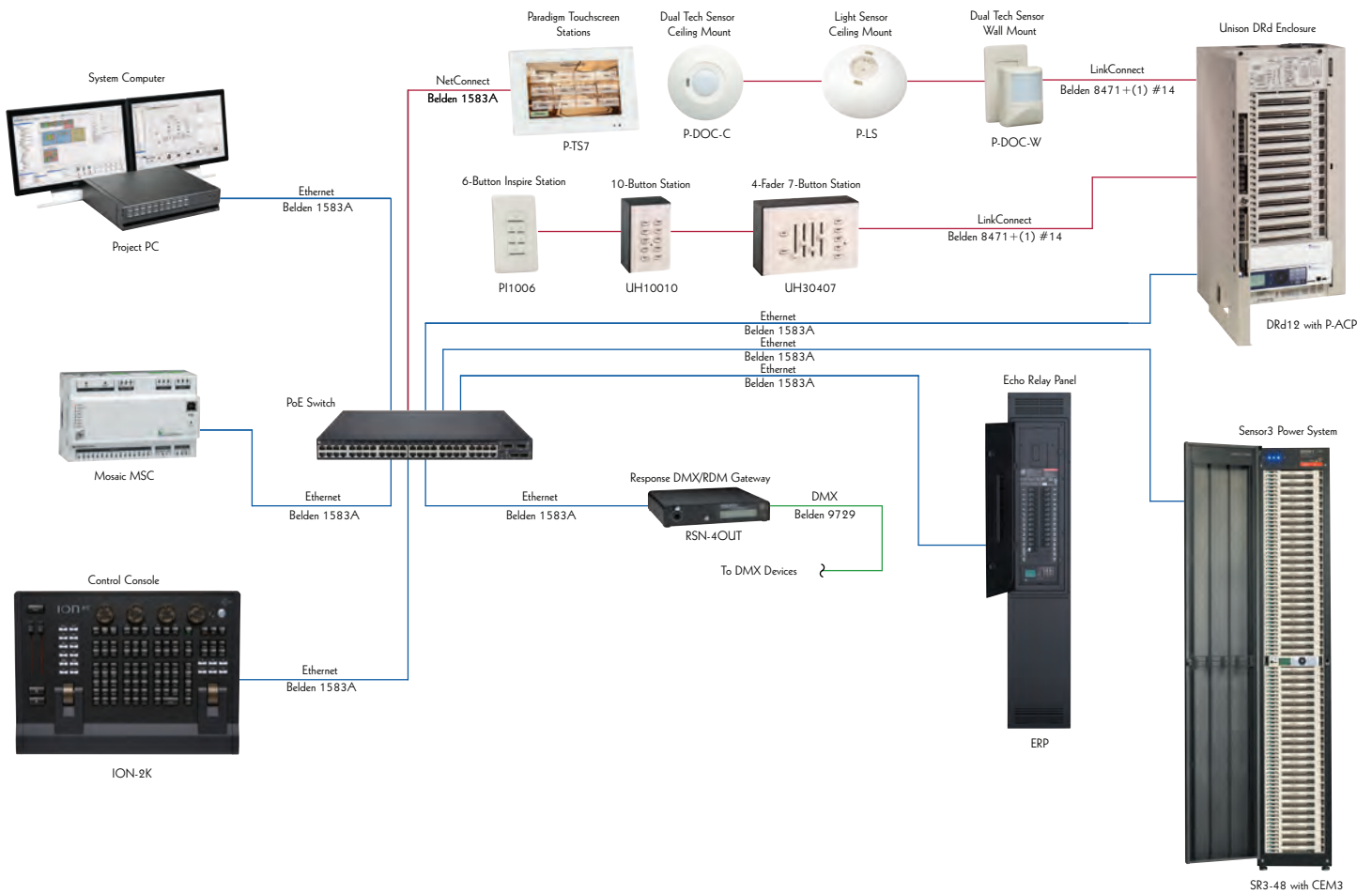
ControlDesigner Software

A companion to LightDesigner, ControlDesigner software provides the tools to create the look and feel of Touchscreen pages and other user interfaces, as well as pre-visualizing the control interfaces. ControlDesigner lets users choose from built-in graphics or build their own as they develop unique interfaces ahead of time and load them when they are ready.

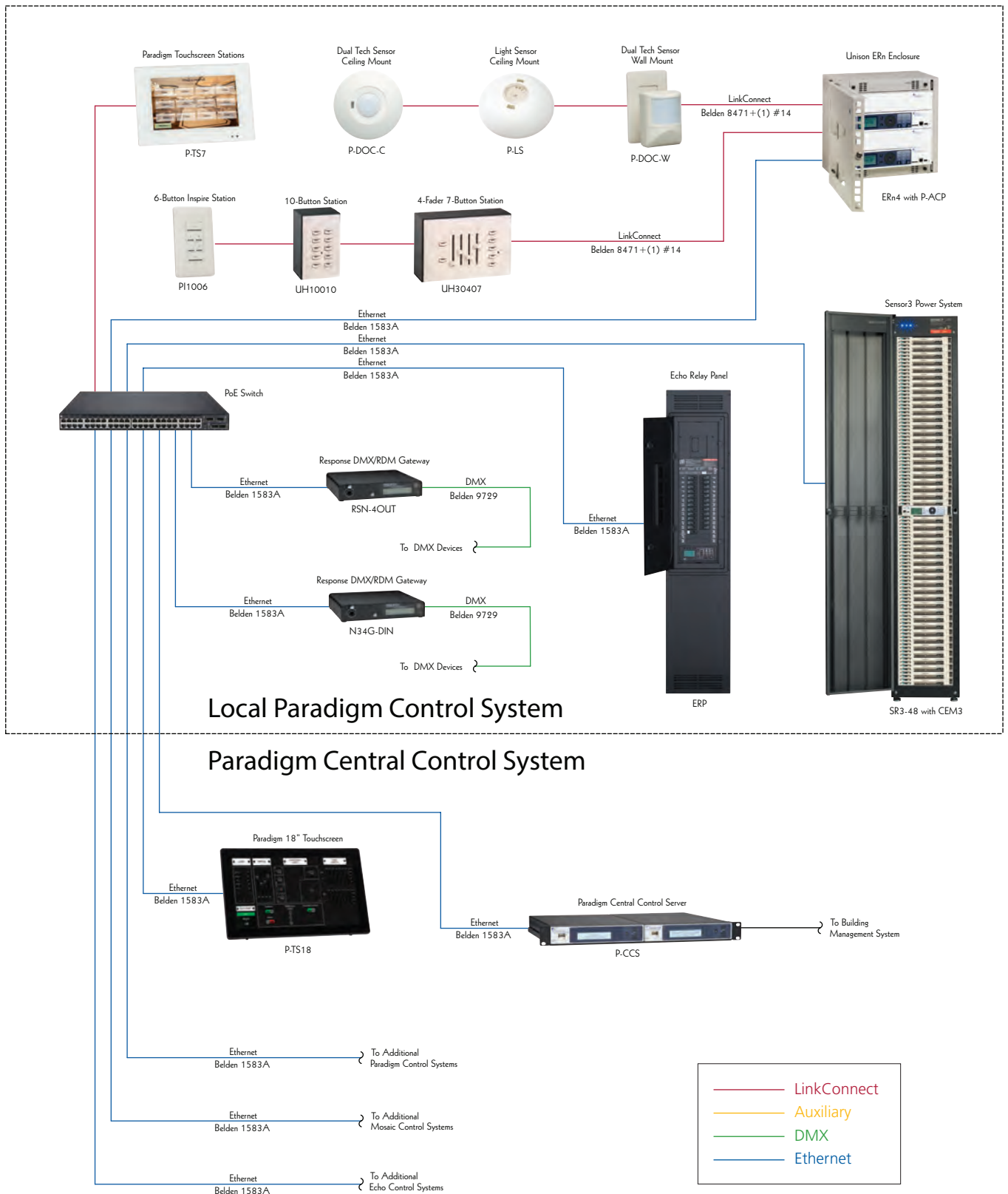
Paradigm Dimming System



Paradigm Control System



Paradigm Integrated System



Paradigm Product List

Inspire Control Stations

Model	Description
PI1001	Inspire 1-button station
PI1002	Inspire 2-button station
PI1004	Inspire 4-button station
PI1006	Inspire 6-button station
PI1008	Inspire 8-button station
PI1104	Inspire 1-fader, 4-button station

Heritage Button Stations

Model	Description
UH00001	1/2-gang, 1-button
UH00002	1/2-gang, 2-button
UH00005	1/2-gang, 5-button
UH10001	1-gang, 1-button
UH10002	1-gang, 2-button
UH10005	1-gang, 5-button
UH10007	1-gang, 7-button
UH10010	1-gang, 10-button
UH11K00	1-gang, 1-keyswitch (maintained)
UH11K01	1 gang, 1-keyswitch (maintained), 1-button
UH11K02	1-gang, 1-keyswitch (maintained), 2-button
UH11K05	1-gang, 1-keyswitch (maintained), 5-button
UH12K00	1-gang, 1-keyswitch (momentary)
UH12K01	1 gang, 1-keyswitch (momentary), 1-button
UH12K02	1-gang, 1-keyswitch (momentary), 2-button
UH12K05	1-gang, 1-keyswitch (momentary), 5-button

Heritage Fader Stations

Model	Description
UH10100	1 gang, 1 fader
UH10101	1 gang, 1 fader, 1 button
UH10102	1 gang, 1 fader, 2 buttons
UH10105	1 gang, 1 fader, 5 buttons
UH30407	3 gang, 4 fader, 7 buttons
UH30412	3 gang, 4 fader, 12 buttons
UH40707	4 gang, 7 fader, 7 buttons
UH40712	4 gang, 7 fader, 12 buttons
UH51007	5 gang, 10 fader, 7 buttons
UH51012	5 gang, 10 fader, 12 buttons
UH61307	6 gang, 13 fader, 7 buttons
UH61312	6 gang, 13 fader, 12 buttons
UH71607	7 gang, 16 fader, 7 buttons
UH71612	7 gang, 16 fader, 12 buttons

Heritage Consolette Stations

Model	Description
UH10001-_1P	1 button
UH10002-_1P	2 button
UH10005-_1P	5 button
UH10007-_1P	7 button
UH10010-_1P	10 button
UH10100-_1P	1 fader
UH10101-_1P	1 fader, 1 button
UH10102-_1P	1 fader, 2 button
UH10105-_1P	1 fader, 5 button
UH30407-_1P	4 fader, 7 button
UH30412-_1P	4 fader, 12 button
UH40707-_1P	7 fader, 7 button
UH40712-_1P	7 fader, 12 button
UH51007-_1P	10 fader, 7 button
UH51012-_1P	10 fader, 12 button
UH61307-_1P	13 fader, 7 button
UH61312-_1P	13 fader, 12 button
UH71607-_1P	16 fader, 7 button
UH71612-_1P	16 fader, 12 button

Architectural Control Processor

Model	Description
P-ACP	Paradigm Architectural Control Processor

ERn Control Enclosures

Model	Description
ERn2-W-120*	2-slot wall mount 100-120V Control Enclosure
ERn2-RM-120*	2-slot rack mount 100-120V Control Enclosure
ERn4-W-120*	4-slot wall mount 100-120V Control Enclosure
ERn4-RM-120**	4-slot rack mount 100-120V Control Enclosure

* Also available in 230V CE and 240V UL

** Also available in 240V UL

DRd Rack Enclosures

Model	Description
DRd6-12*	6-module rack enclosure (12 circuits)
DRd12-24*	12-module rack enclosure (24 circuits)
DRd12-48**	Two 12-module rack enclosures (48 circuits)

*Available in 120V, 230V CE, 240V UL and 277V

**Available in 120V and 277V

Station Power Modules

Model	Description
P-SPM-E	Paradigm Station Power Module
P-REP	Paradigm Station Repeater Module
P-DREP	Paradigm Dual Station Repeater Module

Central Control Server

Model	Description
P-CCS	Paradigm Central Control Server

Power Support Options

Model	Description
URTO	RideThru Option
UPBO	BatteryPack Option

120 VAC Power Modules

Model	Description
ELV10	Dual 10A Electronic Reverse Phase Module
CC20*	Dual 20A Constant Current module
D20FB*	20A Fluorescent Battery Dimmer Module
R20*	Dual 20A Relay Module
D20*	Dual 20A Dimmer Module
D20E*	Dual 20A High Risetime Dimmer Module
D20F*	Single 20A Fluorescent Module

* Also available in 15A capacity

277(A) and 240(H) VAC Power Modules

Model	Description
AELV5/HELV5	Dual 5A Electronic Reverse Phase Module
ACC20/HCC20*	Dual 20A Constant Current module
AD20FB*	Single 20A Fluorescent Battery Dimmer Module
AR20*	Dual 20A Relay Module
AD20*	Dual 20A Dimmer Module
AD20F*	Single 20A Fluorescent Module

* Also available in 15A capacity

Dual Technology Occupancy/Vacancy Sensors

Model	Description
P-DOC-C-SR	Dual Tech Occupancy Sensor–Ceiling Mount - Small Room
P-DOC-C-LR	Dual Tech Occupancy Sensor–Ceiling Mount - Large Room
P-DOC-C-HC	Dual Tech Occupancy Sensor–Ceiling Mount - High Ceiling
P-DOC-W-NR	Dual Tech Occupancy Sensor–Wall Mount - Narrow Coverage
P-DOC-W-WD	Dual Tech Occupancy Sensor–Wall Mount - Wide Coverage

Dual Technology Switch Mount Sensors

Model	Description
P-DOC-SM1	1-Button Switch Mount Dual Tech Sensor
P-DOC-SM2	2-Button Switch Mount Dual Tech Sensor

PIR Occupancy/Vacancy Sensors

Model	Description
P-OCC	Occupancy/Vacancy Sensor - 2,000-square-foot coverage
P-OCC-SR	Occupancy/Vacancy Sensor - Small Room 500-square-foot coverage
P-OCC-HCM	Occupancy/Vacancy Sensor - High Ceilings

Light Sensors

Model	Description
P-LS	Paradigm Light Sensor with Controller
P-LSC	Paradigm Light Sensor Controller Only
P-LSH	Paradigm Light Sensor Head Only

Touchscreen Stations

Model	Description
P-TS7	7" Touchscreen
P-TS7-P/ P-TS7PE	Portable Touchscreen
P-TS7-H	Handheld Touchscreen Station
P-LCD-DOCK	Handheld Touchscreen Docking Station
P-TS-18	18" Touchscreen
P-TSI	Touchscreen Interface

Wireless Access Stations

Model	Description
P-LCD-WAS-1F	Wireless Access Station - Cream (RAL 9001)
P-LCD-WAS-4F	Wireless Access Station - Black (RAL 9004)

More ETC Architectural Systems



Unison Mosaic

Interactive lighting, audio and visual spectacles, and dynamic exterior lighting can differentiate a venue, turning a building into a landmark. Unison Mosaic provides the hardware and software to design, run, and maintain the most demanding projects.

Whether you're painting buildings with LEDs or merging show control, media effects, and more into one visionary work, Unison Mosaic is the solution.



Unison Echo Control

Unison Echo provides flexible, intelligent control — simply. Whether you need basic control, multiple presets, daylighting and occupancy controls, or management of color-changing LED luminaires, Echo has a solution. Echo is a distributed control system, with each room capable of being independently controlled. Advanced features for space combine and third-party system integration are also supported.



Unison Foundry

Unison Foundry DMX-driven distributed power control products help users create complete lighting and plug-load control packages. They are a perfect fit for ETC's Paradigm and Mosaic systems, providing a simple yet robust power infrastructure that can take advantage of the advanced control, energy-saving features, and color expertise in those systems. With simple relay controls, 0-10V control, and phase-adaptive dimming Foundry Zone Controllers ensure all your local control needs are met. Foundry Mini-Panels, in four- and eight-zone models, can mix 120V, 277V, emergency and plug-load circuits in the same panel, which means buildings can do more with less infrastructure.



Hyatt Regency at the Colorado Convention Center
Denver, CO

To learn more about ETC, visit etcconnect.com

Harbin Opera House
Harbin, China
Photo: Adam Mørk



Corporate Headquarters ■ Middleton, WI USA

Global Offices ■ London, UK ■ Rome, IT ■ Holzkirchen, DE ■ Paris, FR ■ Hong Kong ■ Dubai, UAE ■ Singapore ■ New York, NY ■ Orlando, FL ■ Los Angeles, CA

Copyright©2019 ETC. All Rights Reserved. All product information and specifications subject to change. 7180L1001 Rev H 11/19

Trademark and patent info: etcconnect.com/IP

etcconnect.com